

Fial Voter Remote Interface (VRI) for the Raytheon® JPS Communications™ SNV-12 Channel Signal & Noise Voter

Remote Monitoring and Control

Fial Incorporated's Voter Remote Interface program allows remote monitoring and control of up to 28 SNV-12 shelves (configurable). A graphical representation of each shelf shows the state of the LEDs and switches for all populated SVM cards.

Server/Client Architecture

A Server program polls each SNV-12 shelf via TCP/IP (for CPM-3 cards), or via an IP to Serial Converter (for CPM-1 cards). The Server sends updated state information to the Client program. The Client can be run anywhere that has IP connectivity to the Server. The Server program allows up to 20 simultaneous Client connections.

Maintain Control

The Client program operator can remotely perform controls from anywhere there is IP connectivity to the VRI Server. The VRI Client includes report features that relay card voting information and signal quality.

Key Features:

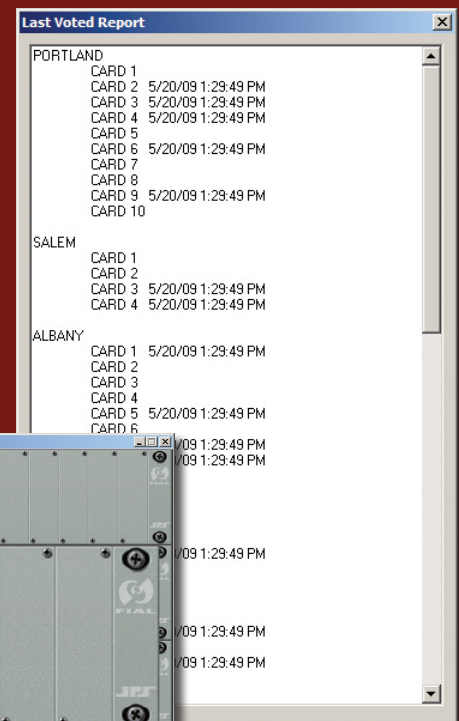
- Easy to Read Interface
- Up to 20 Simultaneous Client Connections
- Manual Control (forced voting)
- Real Time Information - Polls 2 times per second
- Card Voting & Signal Quality Reports



VRI Client



VRI Large View Pop-up



Last Voted Report

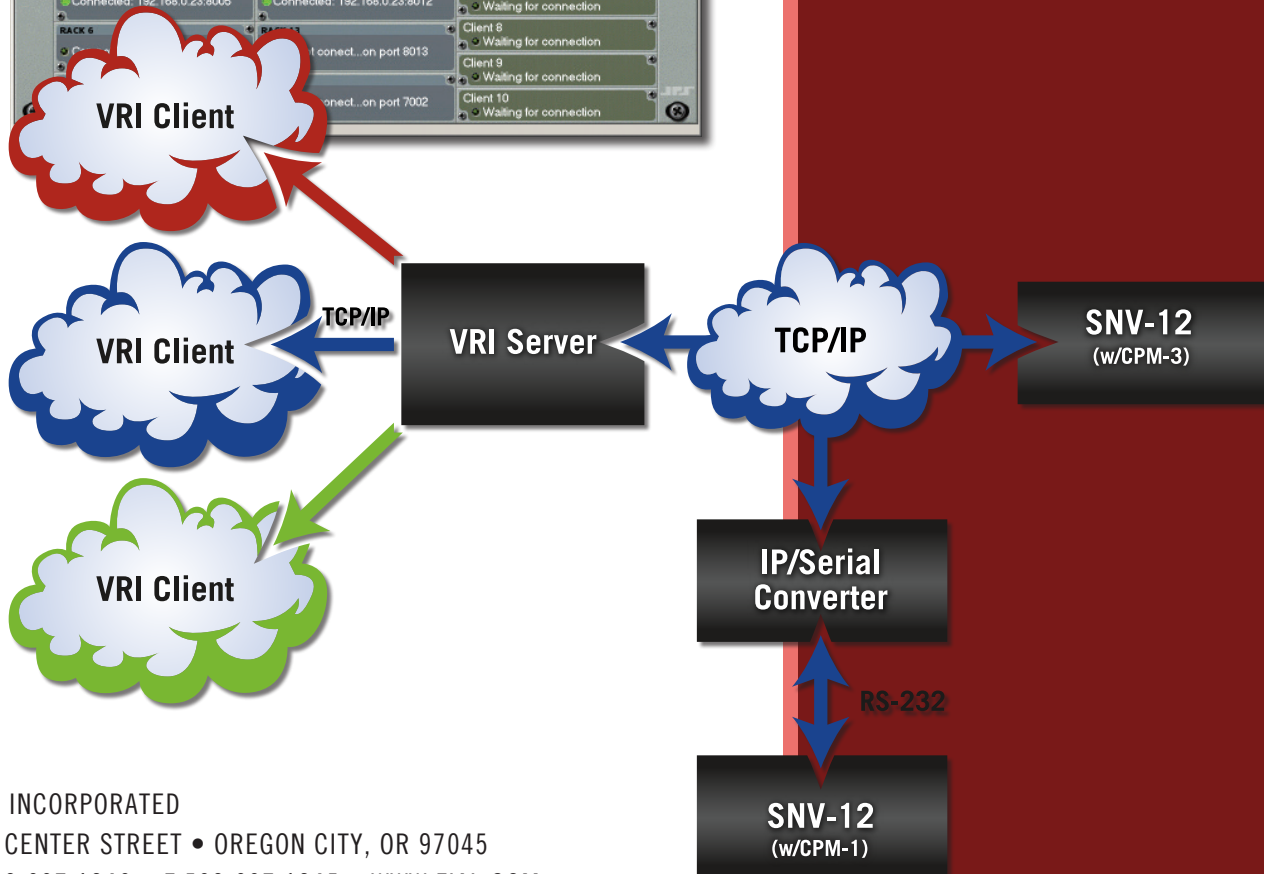
Server & Client Operating System

Microsoft Windows 2000, 2003, 2008 R2 Server,
 XP, Vista, Windows 7 & Windows 8.
 (Dedicated Server not required)

Remote Access

All Server / Client communications are via
 TCP/IP and are encrypted. The VRI Server
 polls/controls SNV-12 shelves w/CPM-3 cards
 via TCP/IP. SNV-12 shelves w/CPM-1 cards
 require an IP to Serial Converter (not included).

VRI Server



Fial Incorporated has developed a nationwide reputation for the design of microprocessor-controlled hardware and the development of software for custom applications at a competitive price.

We have been in business since 1978 with one basic objective: to provide functional, cost-effective solutions while maintaining strong communication links with every customer.

Fial Incorporated's products encompass a wide range of telecommunications alarm monitoring equipment and support multiple protocols, including SNMP, TL1, MCS-11, FarScan™, Badger, TBOS, ELMC and others. Our devices include protocol converters, remote encoders, synchronous packet data bridges, baseband and IF protection switch products, and other specialized equipment.